

OPTION - 4
 BECKERMAN HALL
 1:3011



892 SF DEDICATED STUDENT CENTER,
 ADA COMPLIANT,
 370 SF PARTIAL ADDITION (NO ROOF),
 206 SF FULL ADDITION,
 576 TOTAL ADDITION

SPORTS
 DISPLAY

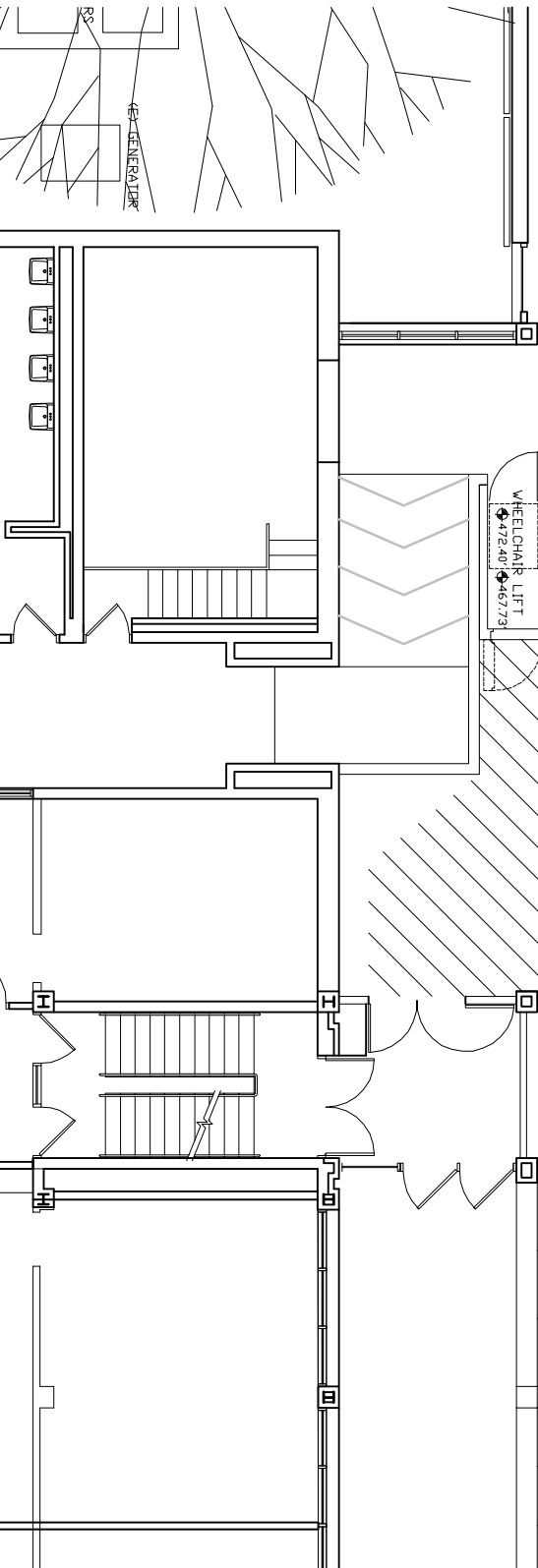
112 SF
 STUDENT STORE

11'-8"

(N) RAMP UP
 1:15 SLOPE±

5'-0"

WHEELCHAIR LIFT
 472.40' 467.73'



GENERAL LTRK